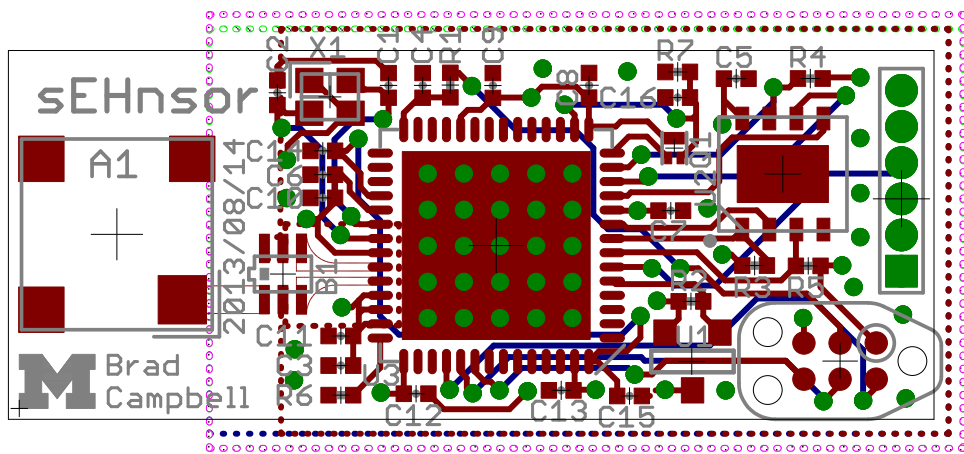
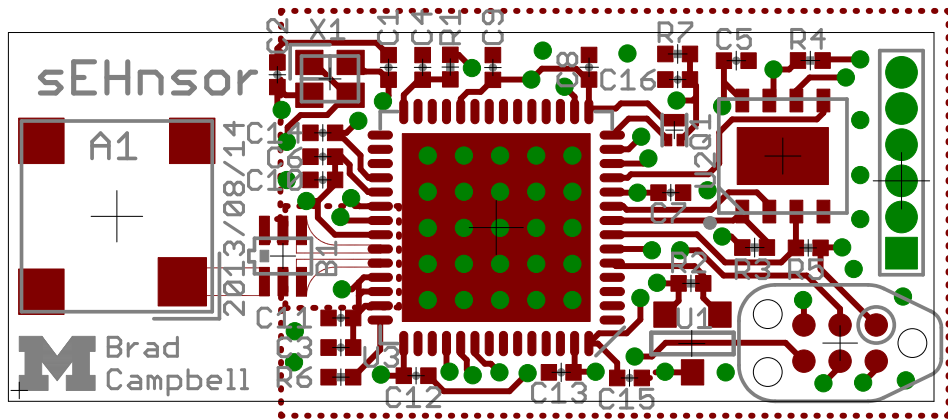
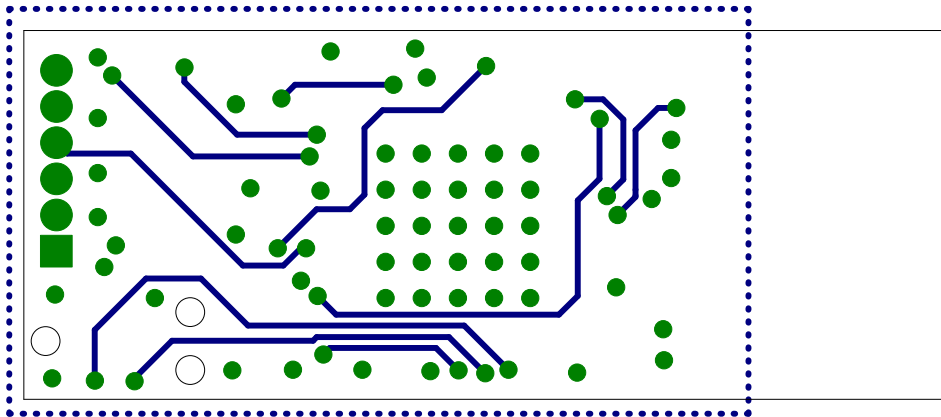


Top and Bottom Layers

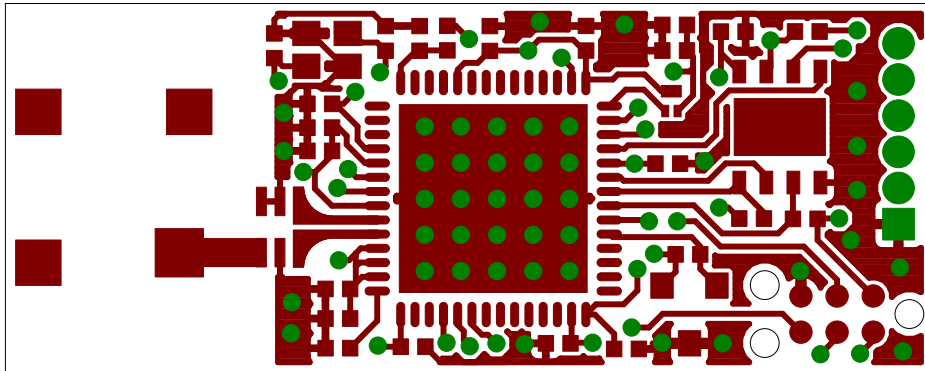




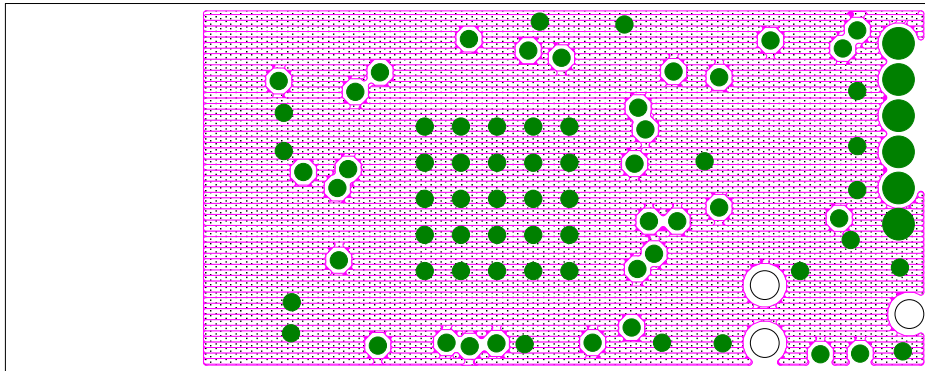
Bottom Layer



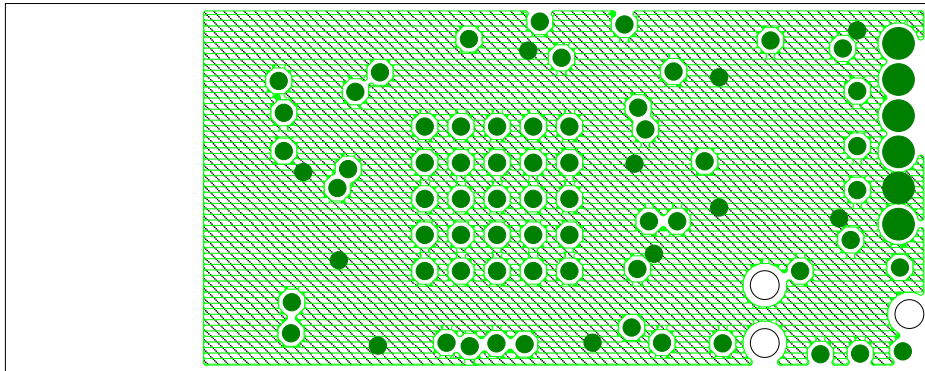
Top Copper Layer



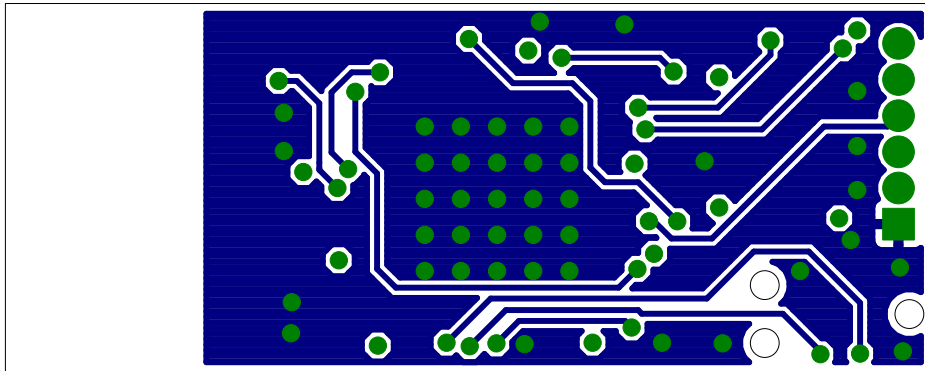
Layer 2 Copper



Layer 3 Copper

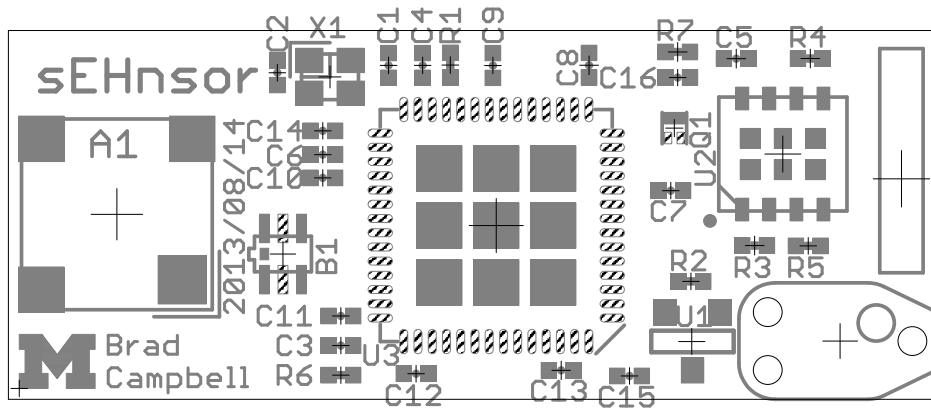


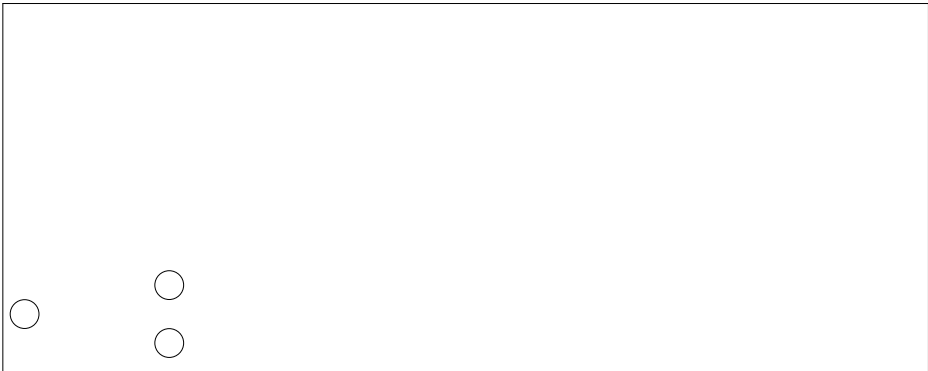
Bottom Copper Layer



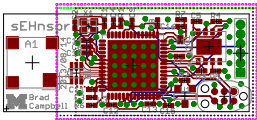


Top Paste Layer with Silkscreen

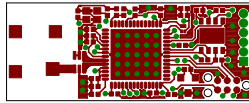




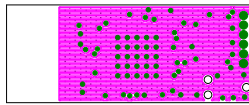
Top and Bottom Layers 1:1 Scale



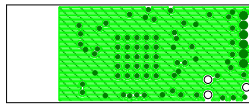
Top Layer 1:1 Scale



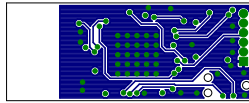
Layer 2 Copper 1:1 Scale



Layer 3 Copper 1:1 Scale



Bottom Copper Layer 1:1 Scale



sEHnsor\_bom.xlsx

Qty	Value	Device
1	FRACTUS-2.4GHZ-FR05-S1-N-0-00	FRACTUS-2.4GHZ-FR05-S1-N-0-00
1	2450BM15A0002	2450BM15A0002
2	12pF	CAPACITOR
1	220pF	CAPACITOR
1	1nF	CAPACITOR
8	0.1uF	CAPACITOR
3	1uF	CAPACITOR
1	2.2uF	CAPACITOR
1	GECKO_POWER_SUPPLY_CONN	GECKO_POWER_SUPPLY_CONN
1	MOSFET-NCHANNELXFDN-3	MOSFET-NCHANNELXFDN-3
2	2.2k	RESISTOR
3	4.7k	RESISTOR
1	56k	RESISTOR
1	4.7M	RESISTOR
1	DS2411	DS2411
1	FM25LBTFDN-8	FM25LBTFDN-8
1	CC2538	CC2538
1	EPSON-FA-128	EPSON-FA-128



sEHnsor\_bom.xlsx

<b>Package</b>	<b>Parts</b>
FRACTUS-ANTENNA-FR05-S1-N-0-00A1	
2450BM	B1
0402_CAP	C1, C2
0402_CAP	C3
0402_CAP	C4
0402_CAP	C5, C6, C7, C8, C9, C10, C11, C1
0402_CAP	C13, C14, C15
0402_CAP	C16
HEADER1X6/0.05IN	J1
XDFN-3	Q1
0402_RES	R1, R2
0402_RES	R3, R4, R5
0402_RES	R6
0402_RES	R7
SOT-23	U1
TDFN-8	U2
S-PVQFN-N56	U3
FA-128	X1

sEHnsor\_bom.xlsx

Description	DIGIKEY
Fractus Reach Xtend	712-1536-1-ND
BALUN JTI MATCHED ZIGBEE	445-1236-1-ND
0402 Capacitor	445-1251-1-ND
0402 Capacitor	445-2651-1-ND
0402 Capacitor	445-1265-1-ND
0402 Capacitor	445-4998-1-ND
0402 Capacitor	445-10882-1-ND
Header on the gecko power supply board.	TMS-106-51-G-S-ND
Generic NMOS footprint	DMN2400UFB4-7DICT-ND
Resistor	RHM2.2KCECT-ND
Resistor	RHM4.7KCECT-ND
Resistor	RHM56KBHCT-ND
Resistor	541-4.7MJCT-ND
Maxim DS2411	DS2411R+CT-ND
IC FRAM 4KBIT 10MHZ 8SOIC	FM25L04B-DGRA-ND
A Powerful System-On-Chip for 2.4-GHz IEEE 802.15.4, 6LoWF	296-35797-1-ND
MHz RANGE CRYSTAL UNIT	SER3800CT-ND

**MOUSER**

**NEWARK RICHARDSON\_RFPD**

FR05-S1-N-0001B

)

877-FM25L04B-DG

595-CC2538SF53RTQT87W7713

732-FA128-32F20X-K3