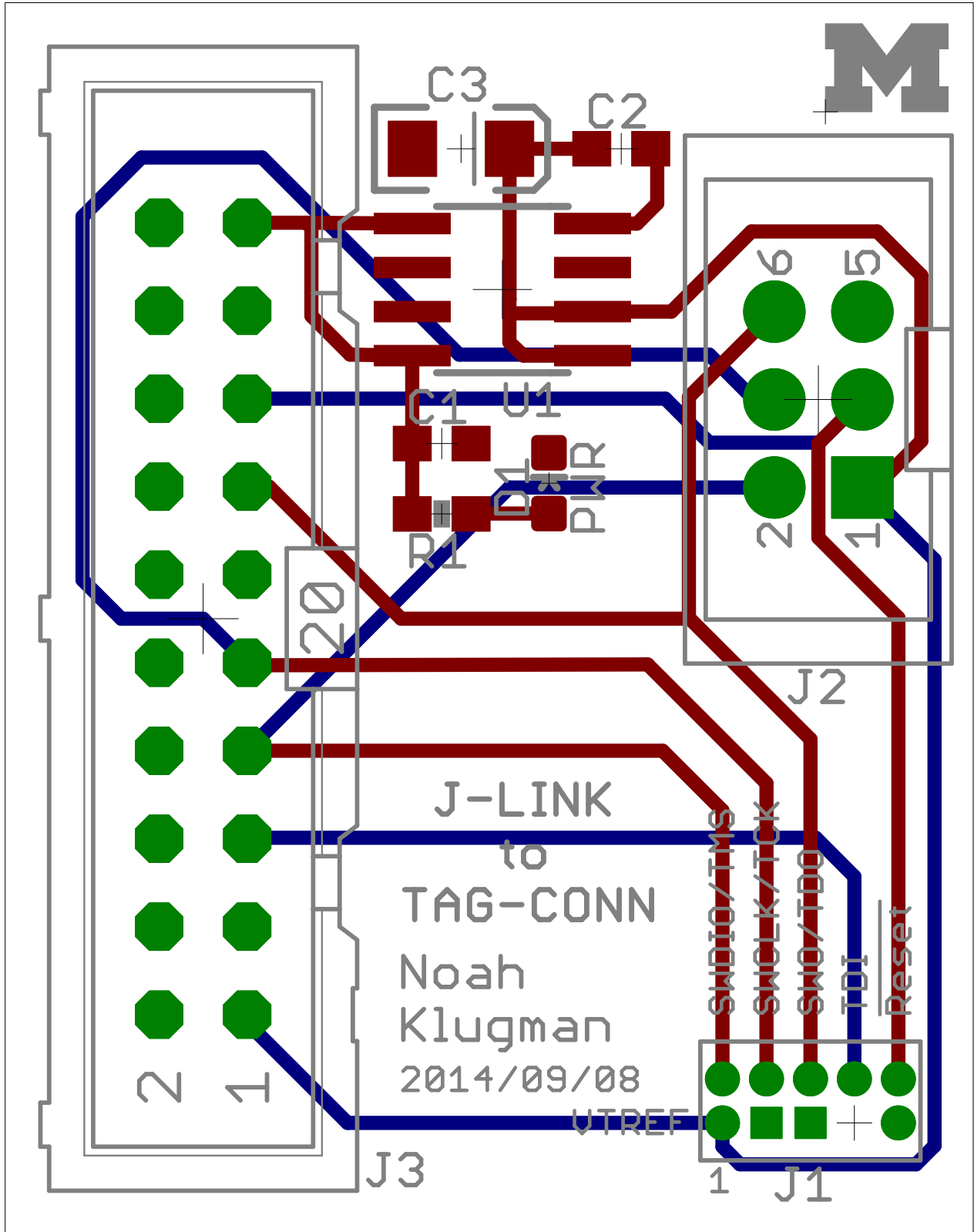
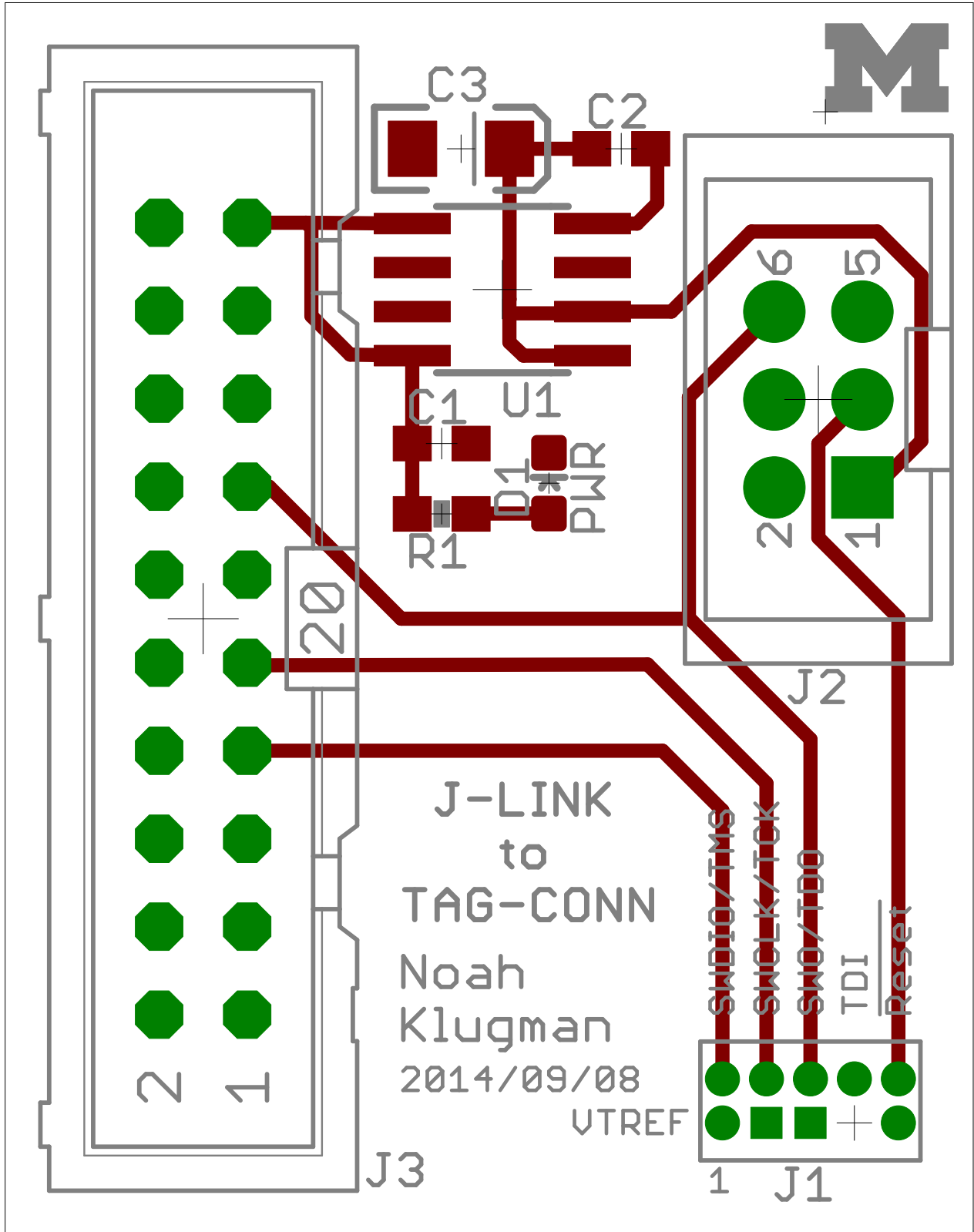
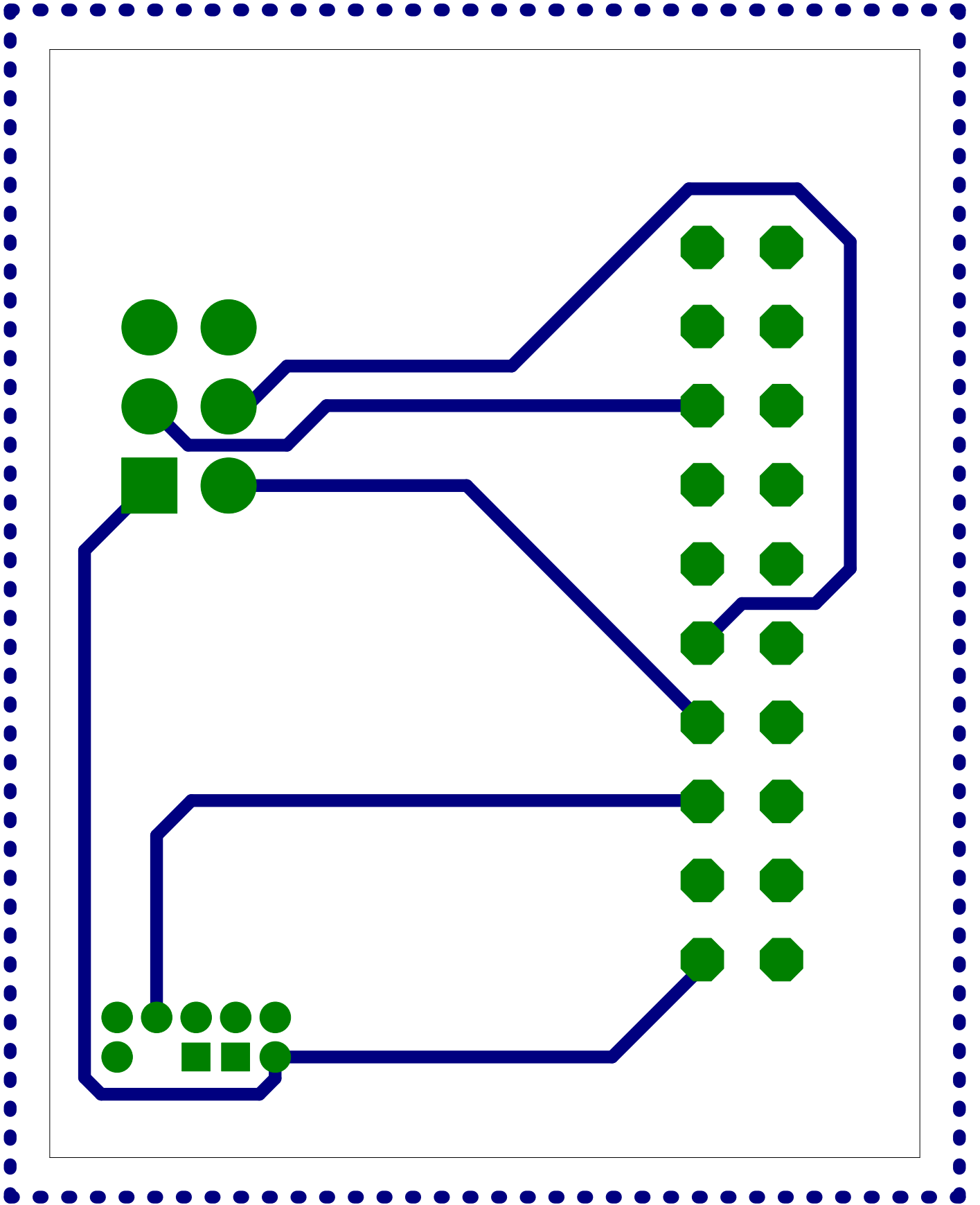


 JLink to Tag Connect	REV: A
Author: Noah Klugman	
Date: 9/8/14 3:34 PM	Sheet: 1/1

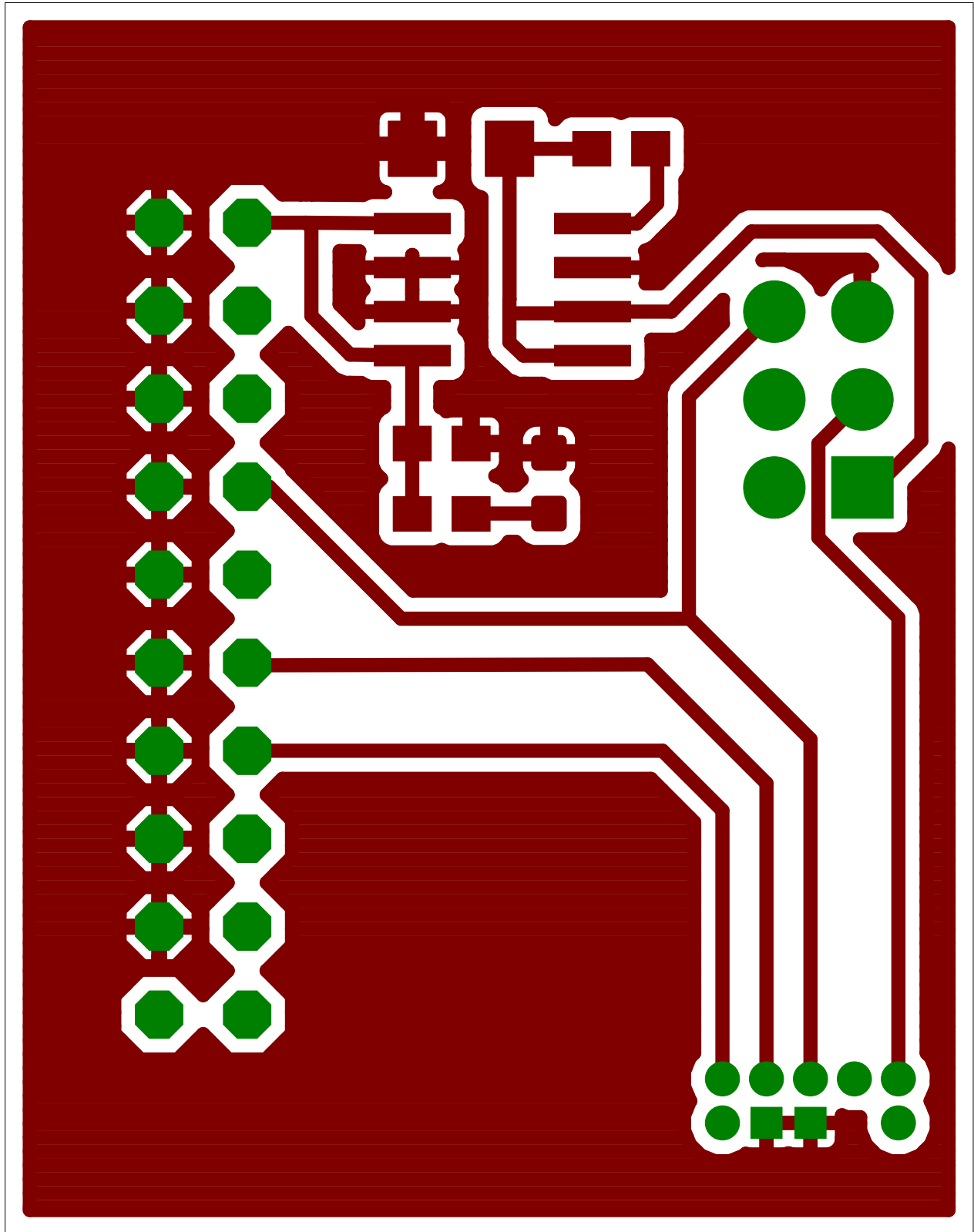




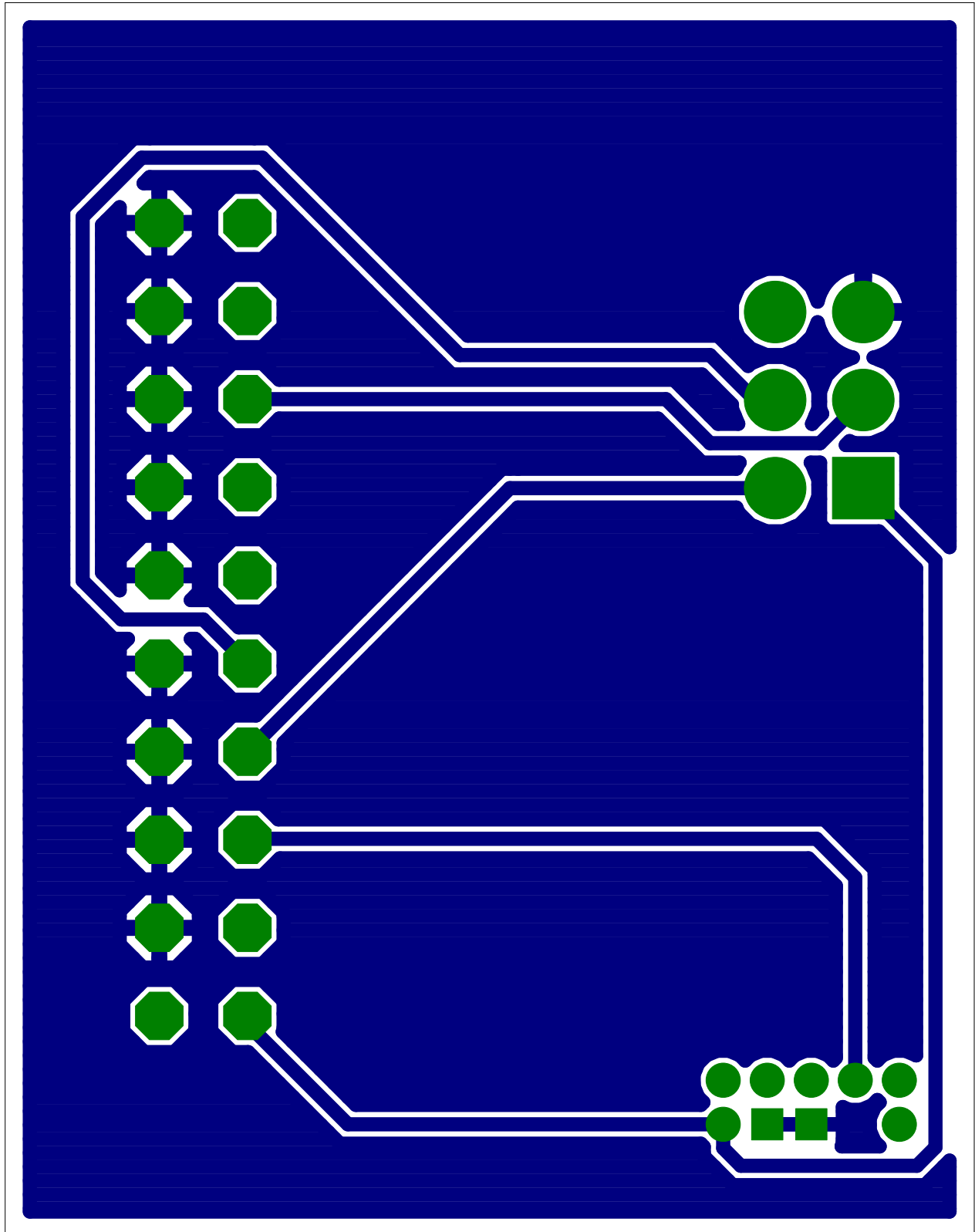
Bottom Layer

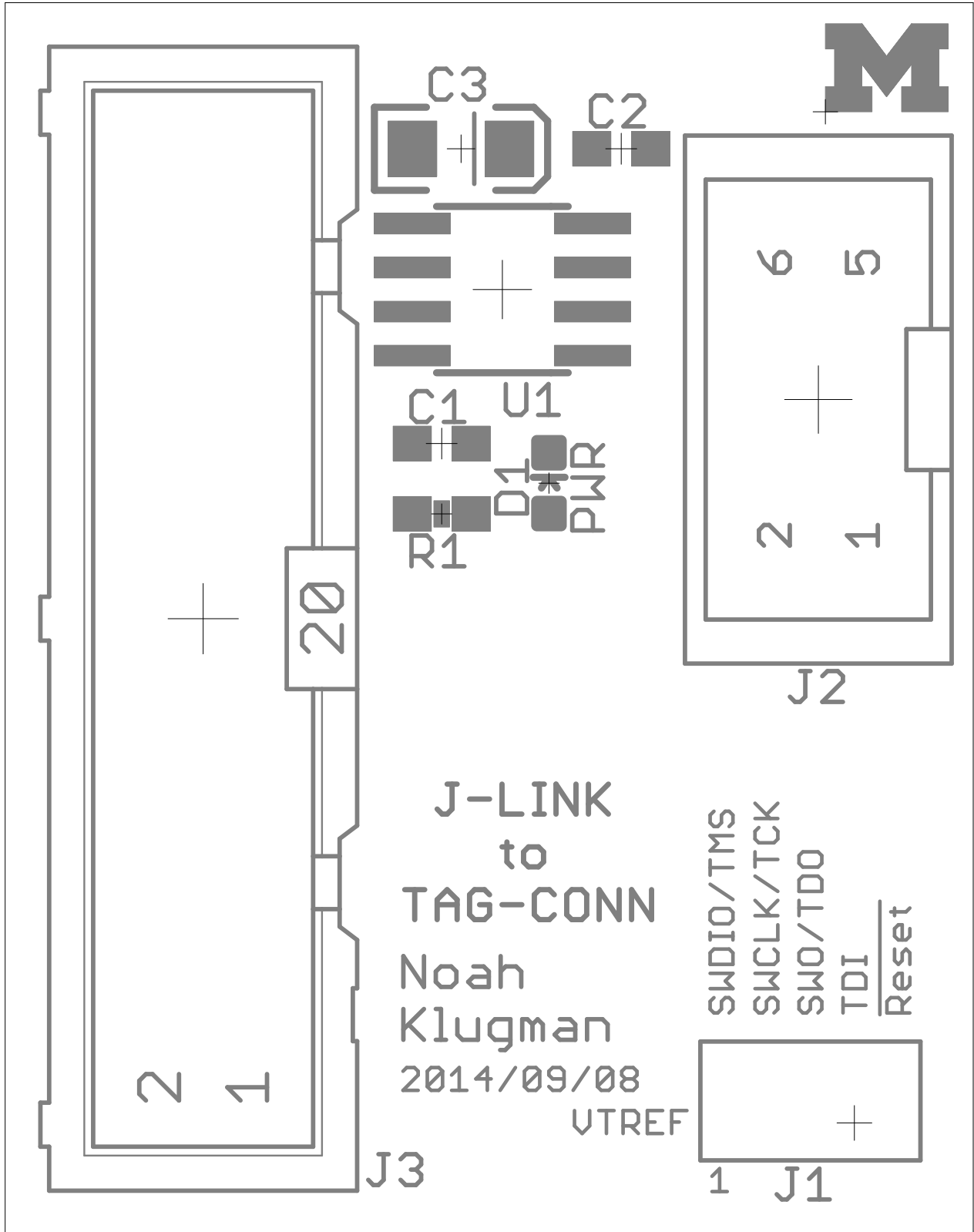


Top Copper Layer

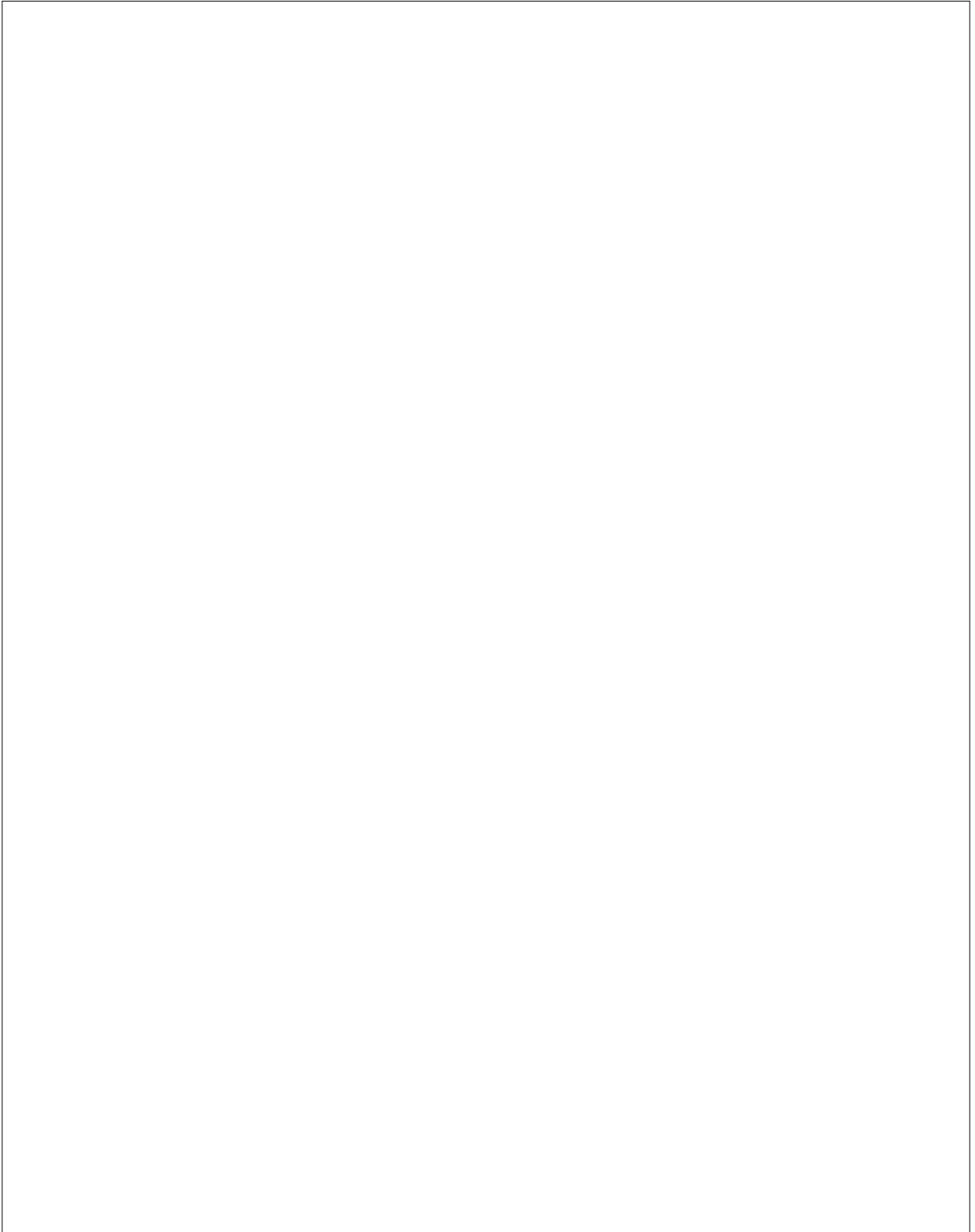


Bottom Copper Layer

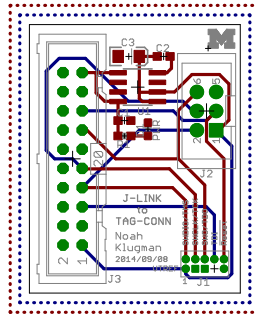


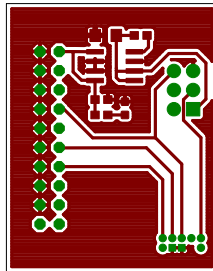


Bottom Paste Layer with Silkscreen

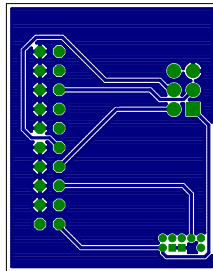


Top and Bottom Layers 1:1 Scale





Bottom Copper Layer 1:1 Scale



Sheet1

Qty	Value	Device	Package	Parts
2	0.01uF	C-EUC0603	C0603	C1, C2
1	10uF	CAP_POL1206	EIA3216	C3
1	BLUE	LED-BLUE0603	LED-0603	D1
1	PINHD-2X5/0.050-NO7	PINHD-2X5/0.050-NO7	2X5-0.050-NO7	J1
1	JLINK_6PIN_TAG-CON	JLINK_6PIN_TAG-CON	2X3_MALE_SHROUDED_0.100	J2
1		ML20	ML20	J3
1		470 RESISTOR0603-RES	0603-RES	R1
1	LT1763CS8-3.3	LT1763CS8-3.3	SOIC8	U1

Sheet1

Description	DIGIKEY
CAPACITOR, European symbol	490-1512-1-ND
Capacitor Polarized	399-3684-1-ND
Blue LEDs for production use	609-3712-ND
This is a 6-pin Tag Connect header with the J-Link.	3M15451-ND
HARTING	S9172-ND
Resistor	
500mA, Low Noise, LDO Micropower Regulators	LT1763CS8-3.3#TRPBFCT-ND