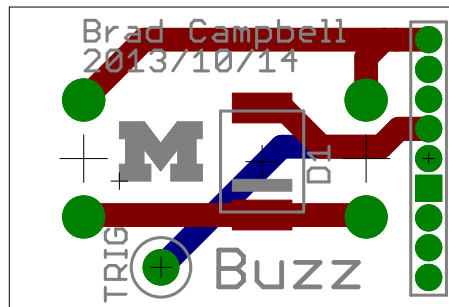
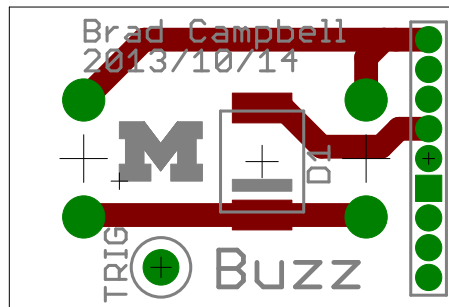


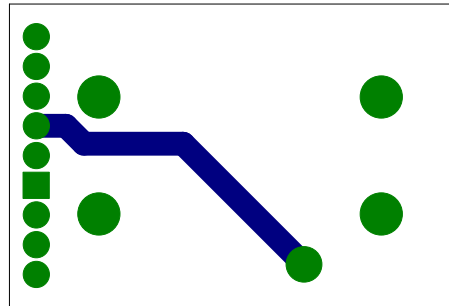
<b>M</b> Buzz	REV: A
Author: Brad Campbell	
Date: 10/14/13 6:19 PM	Sheet: 1/1

Top and Bottom Layers

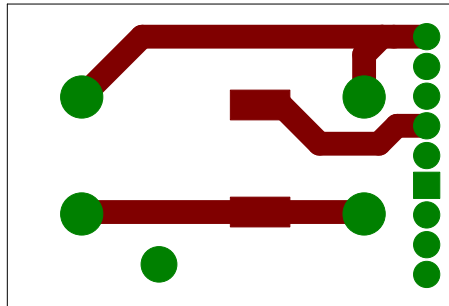




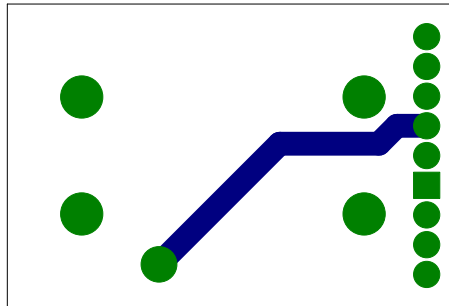
Bottom Layer

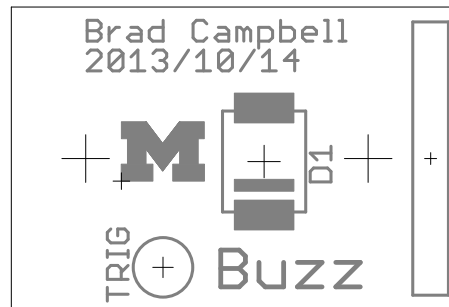


Top Copper Layer



Bottom Copper Layer



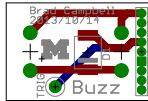


## Bottom Paste Layer with Silkscreen

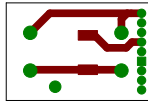




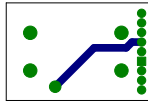
Top and Bottom Layers 1:1 Scale



Top Layer 1:1 Scale



Bottom Copper Layer 1:1 Scale



Sheet1

<b>Qty</b>	<b>Value</b>	<b>Device</b>	<b>Package</b>	<b>Parts</b>
1	LSM115J	LSM115J	D0-214BA	D1
1	IMPULSE_GECKO_HEADER	IMPULSE_GECKO_HEADER	HEADER1X9/0.05IN	J1
1	MSP1007	MSP1007	MSP1007	X1
DNP	MSP1007	MSP1007	MSP1007	X2

Sheet1

<b>Description</b>	<b>DIGIKEY</b>
Diode Schottky 15V 1A	LSM115JE3/TR13CT-ND
Header on the impulse EPIC-esque board.	
Piezoelectric film vibration sensor.	MSP1007-ND
Piezoelectric film vibration sensor.	MSP1007-ND