
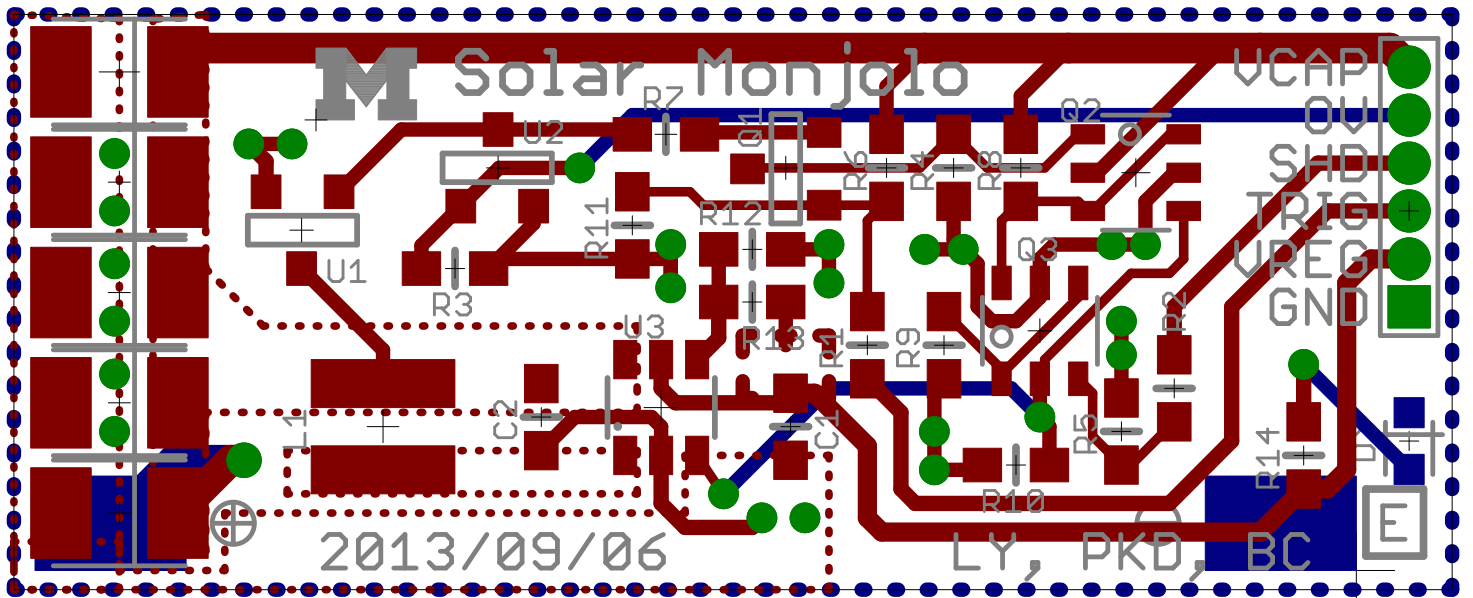
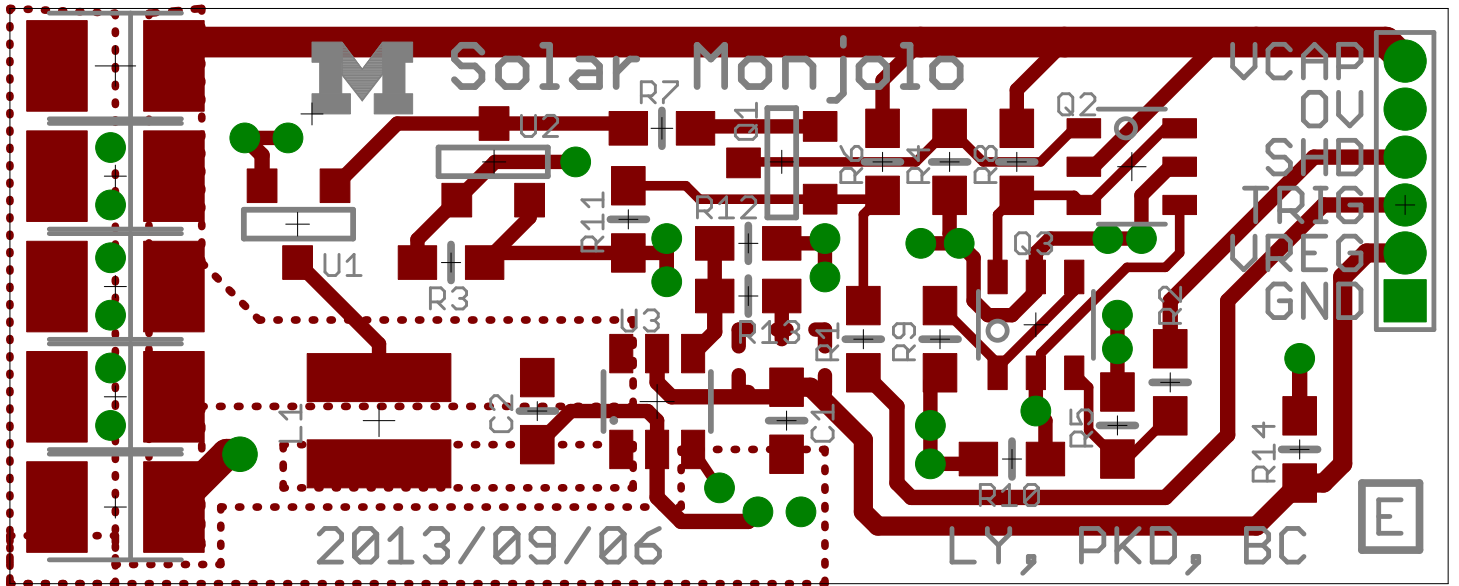


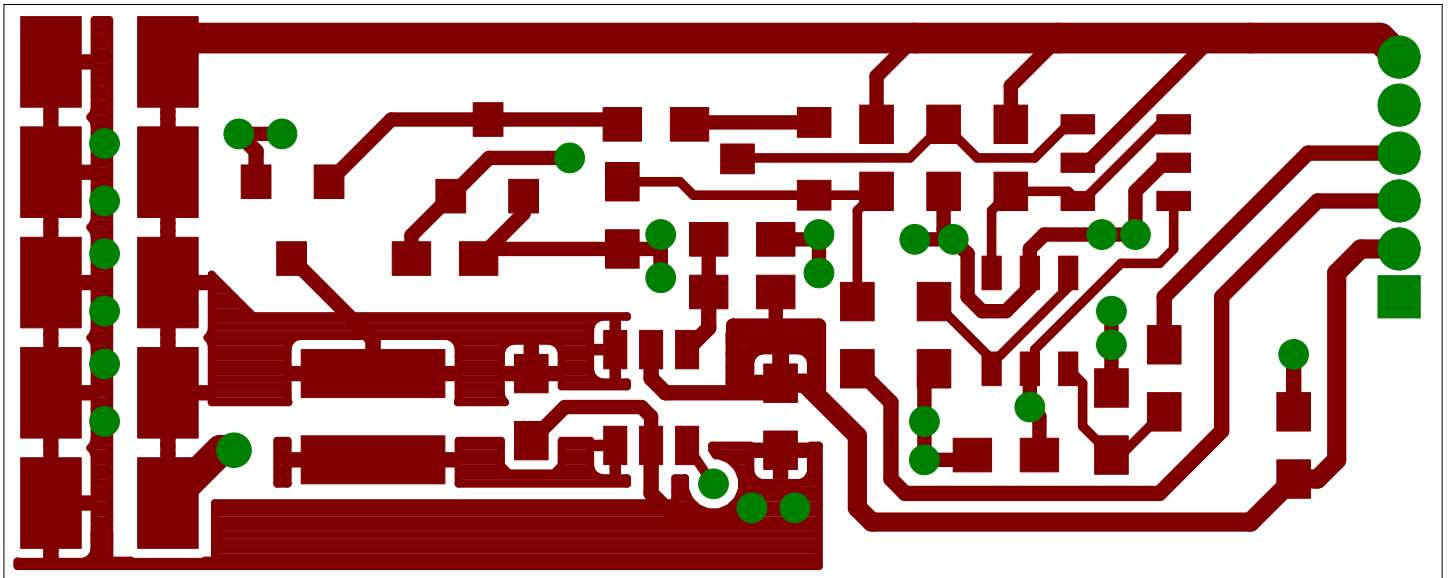
Lohit Yerva, Prabal Dutta University of Michigan		
TITLE: monjolo		
Document Number:		REV: E
Date: 11/26/13 2:30 PM	Sheet: 1/1	



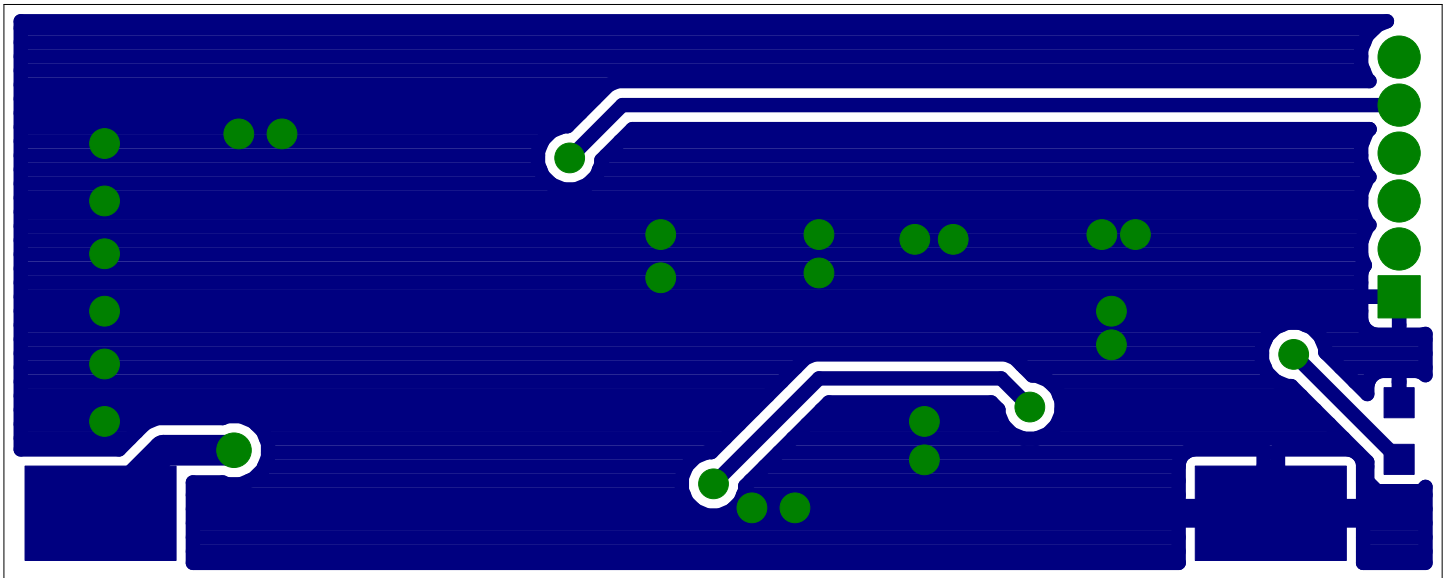


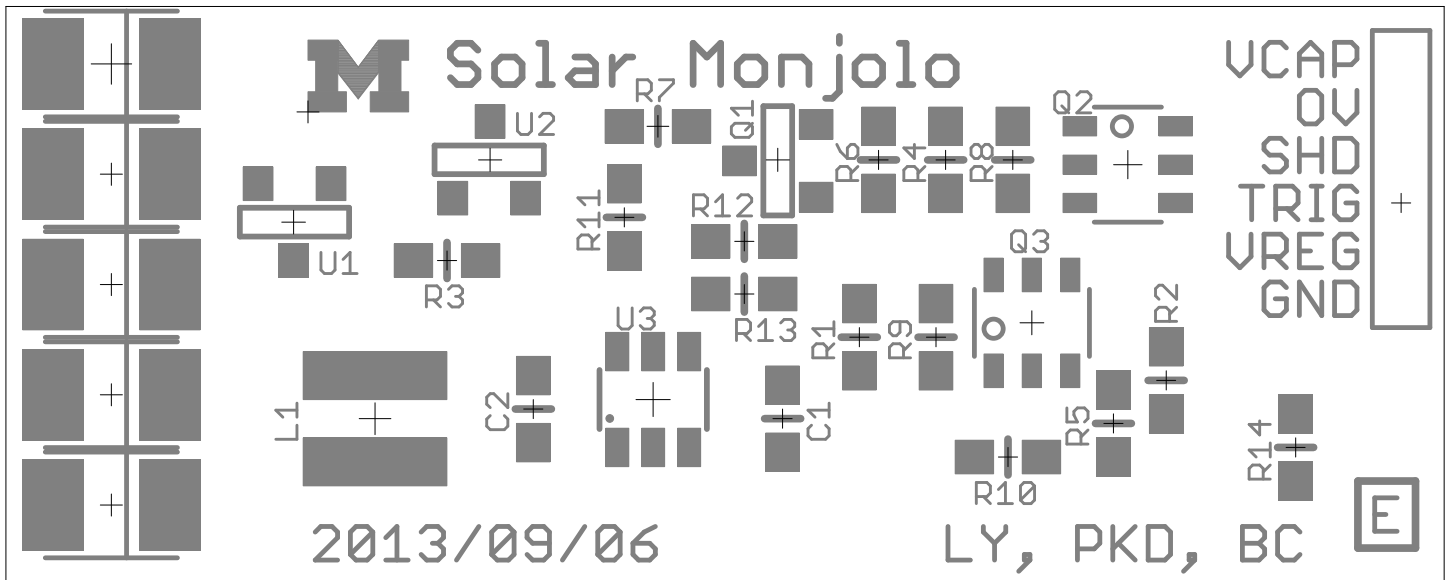


Top Copper Layer

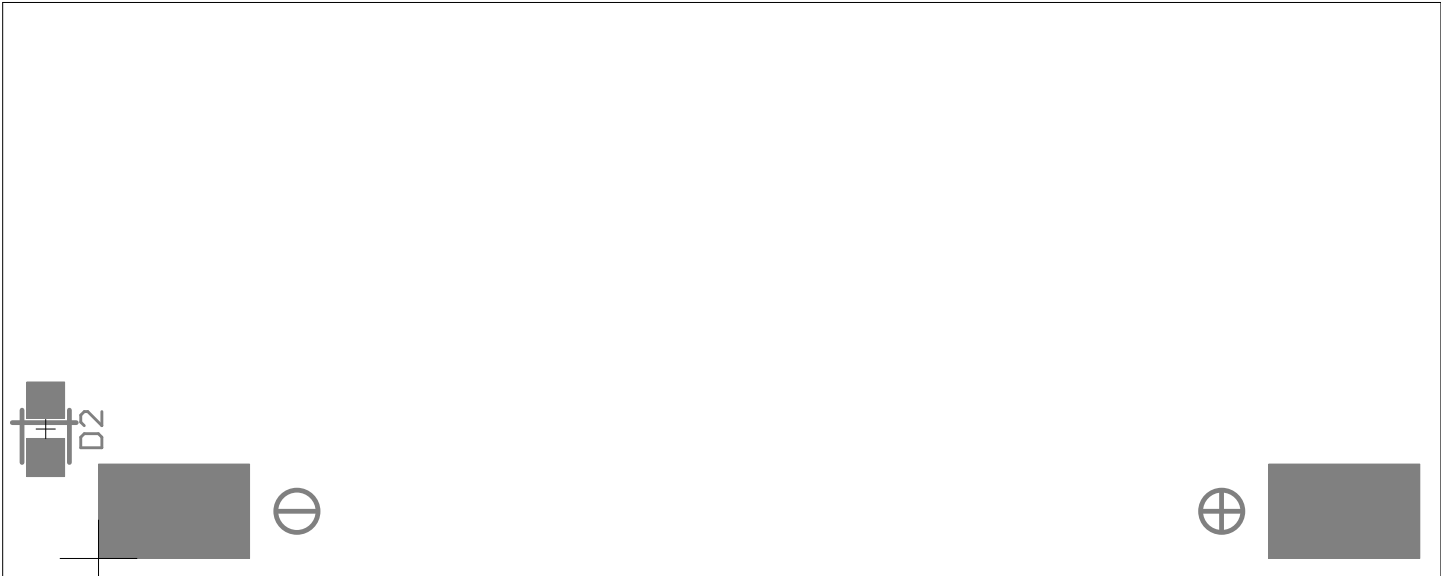


Bottom Copper Layer



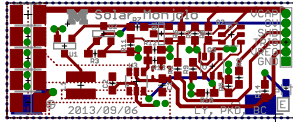


Bottom Paste Layer with Silkscreen

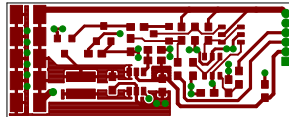




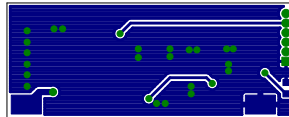
Top and Bottom Layers 1:1 Scale



Top Layer 1:1 Scale



Bottom Copper Layer 1:1 Scale



Qty	Value	Layout	Parts	Digikey Part #	DIGIREEL	Coilcraft	Discription
1	10uF	C0603	C1	445-7486-1-ND	445-7486-6-ND		CAP CER 10UF 10V 10% X5R 0603
1	4.7uF	C0603	C2	490-6407-1-ND	490-6407-6-ND		CAP CER 4.7UF 6.3V 10% X5R 0603
4	100uF	C1206	C3, C4, C5, C6, C7	478-3130-1-ND	478-3130-6-ND		CAP TANT 100UF 6.3V 20% 1210
1	AM-1417	Solar cell	D1	869-1000-ND			SOLAR CELL AM 35MM X 13.9MM
1	LED	LED0603	D2	160-1837-1-ND	160-1837-6-ND		LED BLUE CLEAR 0603 SMD
1	4.7uH	L-US	L1			EPL3012-472MLB	4.7 UH INDUCTOR
1	PMOS	SOT23-3	Q1	SI2305ADS-T1-GE3CT-ND	SI2305ADS-T1-GE3DKR-ND		MOSFET P-CH 8V 5.4A SOT23-3
2	MOSFET NP-CH	6-TSOP	Q2, Q3	SI3585DV-T1-E3CT-ND	SI3585DV-T1-E3DKR-ND		MOSFET N/P-CH 20V 2A/1.5A 6-TSOP
3	1K	R0603	R1, R2, R3	RHM1.00KCFCT-ND	RHM1.00KCFDKR-ND		RES 1.00K OHM 1/10W 1% 0603 SMD
4	100K	R0603	R4, R5, R7, R11	RHM100KCFCT-ND	RHM100KCFDKR-ND		RES 100K OHM 1/10W 1% 0603 SMD
DNP	100K	R0603	R6	RHM100KCFCT-ND	RHM100KCFDKR-ND		RES 100K OHM 1/10W 1% 0603 SMD
3	470K	R0603	R8, R9, R10	RHM470KCFCT-ND	RHM470KCFDKR-ND		RES 470K OHM 1/10W 1% 0603 SMD
1	649K	R0603	R12	541-649KHCT-ND	541-649KHDKR-ND		RES 649K OHM 1/10W 1% 0603 SMD
1	976K	R0603	R13	541-976KHCT-ND	541-976KHDKR-ND		RES 976K OHM 1/10W 1% 0603 SMD
1	470	R0603	R14	RHM470CFCT-ND	RHM470CFDKR-ND		RES 470 OHM 1/10W 1% 0603 SMD
1	MN1382S 2.0V	SOT23-3	U1	TC54VC2102ECB713CT-ND	TC54VC2102ECB713DKR-ND		IC VOLT DETECT 2.0V CMOS SMD
1	TC54VC 2.9V	SOT23-3	U2	TC54VC2902ECB71CT-ND	TC54VC2902ECB71DKR-ND		IC VOLT DETECTOR 2.9V SOT23A
1	MCP1640T	SOT23-6	U3	MCP1640T-I/CHYCT-ND	MCP1640T-I/CHYDKR-ND		IC BOOST SYNC ADJ 0.1A SOT23-6

**Notes**

---

To use External Trigger solder R6 instead of R11

Not needed if not using external Trigger (R11 soldered)